

WARMTH

WHEREVER THE WORK TAKES YOU



Like your team's ready for work, we're ready for weather.

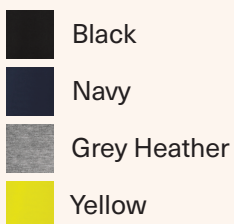


PERFORMANCE WORK HOODIE

**Stronger than a cup of straight black coffee,
our performance work hoodie is built to last.**

- **ZeroScratch®** zipper keeps painted surfaces protected
- **Durable Water Repellant (DWR)** finish keeps everything dry
- **SafeCinch®** drawstrings snatch it all in

Plus, with pockets a' plenty, it's easy to stay close to the important things, as well as the not so important ones too (hello, sweet treat).



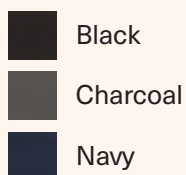
Style #HJ10





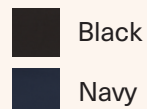
MEN'S FIT

Style #JP68



WOMEN'S FIT

Style #JP67



DELUXE SOFT SHELL JACKET

Designed with dry in mind, the men and women's deluxe soft-shell jacket isn't afraid of a little water or wind.

- **Durable Water Repellant (DWR)** finish sheds moisture
- **Zip pockets** keep everything snug and secure
- **Flex fabric** moves with every bend, jump, reach, and stretch

With a full-zip front, it layers up (or down), tosses on (or off), and can tag along wherever the job goes.



PERMA-LINED PANEL JACKET

The perma-lined jacket is meant for those who just have stuff to carry.

- **Touts more pockets** than anyone can probably fill
- **Falls at the hip** so it flatters and fits just about every body type
- **Perma-lined quilted fabric** adds an oomph of extra warmth

This jacket is meant for those days when the weather just isn't weathering.

Style #JT50

	Black		Navy
	Brown		Spruce Green
	Charcoal		



SOFT SHELL VEST

This vest is built to handle the storm, both the literal and figurative.

- **Durable Water Repellant (DWR)** finish keeps things dry
- **Flex fabric** makes it easy to move
- **Zip-up pockets** keep the things that shouldn't be moving secure

Worn alone or paired with more, these vests are as versatile as the people wearing them.



- Black
- Charcoal
- Navy

**DUAL
POCKETS**



Style #VP62



Outfitting fun at work since 1923.

GET WITH THE PROGRAM!

Connect with our uniform experts to choose the styles that work for your team or visit redkap.com/business-hub to learn more!

Connect With An Expert

Part of the Workwear Outfitters Family of Brands



WORKWEAR
OUTFITTERS

